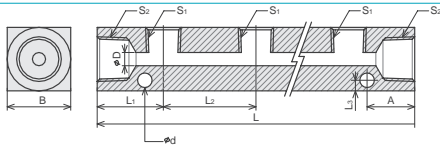


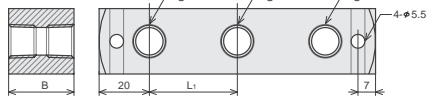
マニホールド

使用圧力：最高21.0MPa 常用14.0MPa



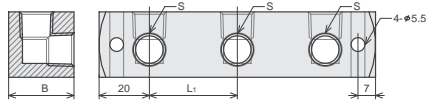
MBRプランチ

呼称 連数-S ₁ × S ₂	品番	価格	L	L ₂
2-1/8 × 1/4	MBR-12008	1,868	70	30
3-1/8 × 1/4	MBR-13008	2,380	100	30
4-1/8 × 1/4	MBR-14008	2,985	130	30
5-1/8 × 1/4	MBR-15008	3,191	160	30
6-1/8 × 1/4	MBR-16008	4,195	190	30
2-1/4 × 3/8	MBR-22008	2,305	85	35
3-1/4 × 3/8	MBR-23008	3,095	120	35
4-1/4 × 3/8	MBR-24008	3,890	155	35
5-1/4 × 3/8	MBR-25008	4,160	190	35
6-1/4 × 3/8	MBR-26008	4,862	225	35
2-3/8 × 1/2	MBR-32008	2,529	95	35
3-3/8 × 1/2	MBR-33008	3,333	130	35
4-3/8 × 1/2	MBR-34008	4,142	165	35
5-3/8 × 1/2	MBR-35008	4,947	200	35
6-3/8 × 1/2	MBR-36008	5,756	235	35



MTSターミナル(ストレート)

呼称 連数-S	品番	価格	L	L ₁
2-1/8	MTS-12008	2,126	70	30
3-1/8	MTS-13008	2,858	100	30
4-1/8	MTS-14008	3,589	130	30
5-1/8	MTS-15008	4,326	160	30
6-1/8	MTS-16008	5,058	190	30
2-1/4	MTS-22008	2,521	75	35
3-1/4	MTS-23008	3,479	110	35
4-1/4	MTS-24008	4,432	145	35
5-1/4	MTS-25008	5,389	180	35
6-1/4	MTS-26008	6,342	215	35

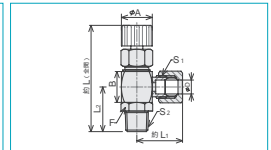
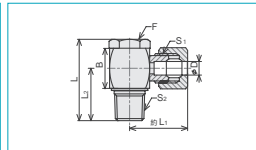
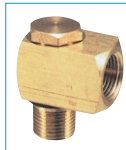


MTLターミナル(エルボ)

呼称 連数-S	品番	価格	L	L ₁
2-1/8	MTL-12008	2,126	70	30
3-1/8	MTL-13008	2,858	100	30
4-1/8	MTL-14008	3,589	130	30
5-1/8	MTL-15008	4,326	160	30
6-1/8	MTL-16008	5,058	190	30
2-1/4	MTL-22008	2,521	75	35
3-1/4	MTL-23008	3,479	110	35
4-1/4	MTL-24008	4,432	145	35
5-1/4	MTL-25008	5,389	180	35
6-1/4	MTL-26008	6,342	215	35

旋回エルボ・旋回ニードルバルブ

使用圧力：最高7.0MPa 常用3.5MPa (旋回共通)

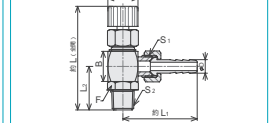
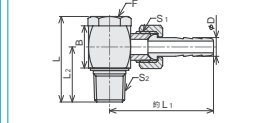


TRL旋回エルボ

呼称 D × S ₂	品番	価格	L	約L ₁
3 × 1/8	TRL-03818	1,545	30.0	20.0
4 × 1/8	TRL-04818	1,549	30.0	20.0
5 × 1/8	TRL-05818	1,549	30.0	20.0
6 × 1/8	TRL-06818	1,818	33.5	26.5
6 × 1/4	TRL-06828	1,833	36.5	26.5
8 × 1/8	TRL-08818	1,825	33.5	27.5
8 × 1/4	TRL-08828	1,840	36.5	27.5
8 × 3/8	TRL-08838	2,000	41.5	29.5
10 × 1/4	TRL-10828	2,207	40.5	31.0
10 × 3/8	TRL-10838	2,215	41.5	31.0
12 × 3/8	TRL-12838	2,873	47.0	37.0
12 × 1/2	TRL-12848	2,909	50.0	37.0

VTR旋回ニードルバルブ

品番	価格	約L	約L ₁
VTR-06818	2,916	64	26.5
VTR-06828	2,931	67	26.5
VTR-08818	2,924	64	27.5
VTR-08828	2,938	67	27.5
VTR-08838	3,215	76	29.5
VTR-10828	3,422	75	31.0
VTR-10838	3,429	76	31.0
VTR-12838	4,255	89	37.0
VTR-12848	4,291	92	37.0

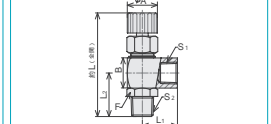
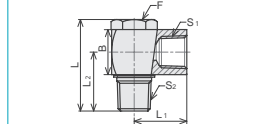


THL旋回エルボ

呼称 D × S ₂	品番	価格	L	約L ₁
5.0 × 1/8	THL-01818	1,589	30.0	32.0
6.5 × 1/8	THL-02818	1,589	30.0	36.5
8.0 × 1/8	THL-03818	1,876	33.5	43.5
8.0 × 1/4	THL-03828	1,891	36.5	43.5
9.5 × 1/4	THL-04828	2,291	40.5	49.0
9.5 × 3/8	THL-04838	2,298	41.5	49.0
10.0 × 1/4	THL-05828	2,305	40.5	50.5
10.0 × 3/8	THL-05838	2,313	41.5	50.5
11.0 × 1/4	THL-06828	2,305	40.5	52.0
11.0 × 3/8	THL-06838	2,313	41.5	52.0
12.0 × 3/8	THL-07838	3,011	47.0	58.0
12.0 × 1/2	THL-07848	3,047	50.0	58.0
12.7 × 3/8	THL-08838	3,011	47.0	58.5
12.7 × 1/2	THL-08848	3,047	50.0	58.5
14.0 × 3/8				
14.0 × 1/2	THL-09848	3,109	50.0	67.0

VTH旋回ニードルバルブ

品番	価格	約L	約L ₁
VTH-03818	3,272	64	43.5
VTH-03828	3,288	67	43.5
VTH-04828	3,856	75	49.0
VTH-04838	3,864	76	49.0
VTH-05828	3,872	75	50.5
VTH-05838	3,880	76	50.5
VTH-06828	3,872	75	52.0
VTH-06838	3,880	76	52.0
VTH-07838	4,832	89	58.0
VTH-07848	4,872	92	58.0
VTH-08838	4,832	89	58.5
VTH-08848	4,872	92	58.5
VTH-09838	4,900	89	67.0
VTH-09848	4,940	92	67.0



TSL旋回エルボ

呼称 S ₁ × S ₂	品番	価格	L	L ₁
1/8 × 1/8	TSL-81818	1,400	30.0	16
1/4 × 1/4	TSL-82828	1,651	36.5	21
3/8 × 3/8	TSL-83838	1,953	41.5	24
1/2 × 1/2	TSL-84848	2,535	50.0	29
1/8 × 1/4	TSL-81828	1,665	36.5	21
1/4 × 1/8	TSL-82818	1,953	33.5	21
1/4 × 3/8	TSL-82838	2,535	41.5	24
3/8 × 1/4	TSL-83828	1,636	40.5	24
3/8 × 1/2	TSL-83848	1,945	50.0	29
1/2 × 3/8	TSL-84838	2,498	47.0	29

VTS旋回ニードルバルブ

品番	価格	約L	L ₁
VTS-81818	2,324	64	21
VTS-82828	2,340	67	21
VTS-83838	2,608	76	24
VTS-84848	3,116	97	29
VTS-81828	2,340	67	21
VTS-82818	2,516	64	21
VTS-82838	3,000	76	24
VTS-83828	2,416	75	24
VTS-83848	2,716	92	29
VTS-84838	3,076	89	29



1
 空気・油圧・真空
 直動システム・関連
 ロボット・FA
 制御・検出・計測
 駆動・回転
 軸受・素材・機械
 動力伝達・伝動
 搬送・運搬
 ポンプ・送風機・粉体
 工場設備・環境