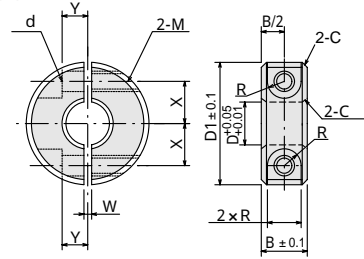


標準セットカラー



RSC形寸法図



セパレート形セットカラー RSC形

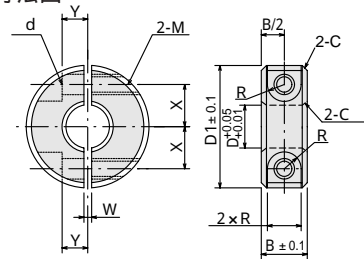
●材質：カラー：SS400(黒染め) 止めねじ：SCM435 単位：mm

型 式	価格	軸穴径 D	総幅 B±0.1	外径 D1	W	X	Y	止めねじ M×長さ	型 式	価格	軸穴径 D	総幅 B±0.1	外径 D1	W	X	Y	止めねじ M×長さ
RSC-0308	950	3	8	15	1	4.5	3	M3×8	RSC-1615	1,600	16	15	40	1.5	13	8	M6×20
RSC-0408	950	4	8	15	1	4.5	3	M3×8	RSC-1715	1,600	17	15	40	1.5	13	8	M6×20
RSC-0508	1,050	5	8	20	1	5.5	4	M3×10	RSC-1815	1,650	18	15	45	1.5	15	8	M6×20
RSC-0510	1,250	5	10	20	1	6	4	M4×10	RSC-2010	1,650	20	10	40	1.5	14	7	M4×16
RSC-0608	1,300	6	8	20	1	6	4	M3×10	RSC-2012	1,650	20	12	40	1.5	14	7	M5×16
RSC-0610	1,300	6	10	20	1	6	4	M4×10	RSC-2015	1,650	20	15	45	1.5	15	8	M6×20
RSC-0808	1,500	8	8	25	1.5	8	5	M3×10	RSC-2512	1,650	25	12	45	1.5	17	7	M5×16
RSC-0810	1,500	8	10	25	1.5	8	5	M4×12	RSC-2515	1,800	25	15	50	1.5	18	10	M6×25
RSC-0812	1,500	8	12	28	1.5	8.5	5	M5×16	RSC-3015	1,900	30	15	55	1.5	20	10	M6×25
RSC-0815	1,500	8	15	30	1.5	9	5	M6×15	RSC-3515	2,050	35	15	60	2	23	12	M6×25
RSC-1010	1,550	10	10	30	1.5	9	5	M4×12	RSC-4018	2,500	40	18	70	2	26	13	M8×30
RSC-1012	1,550	10	12	30	1.5	9	5	M5×16	RSC-4518	2,650	45	18	75	3	28	14	M8×30
RSC-1015	1,550	10	15	35	1.5	10	6	M6×14	RSC-5022	3,000	50	22	85	3	32	16	M10×35
RSC-1210	1,550	12	10	30	1.5	10	5	M4×12	RSC-5522	3,300	55	22	90	3	34	18	M10×35
RSC-1212	1,550	12	12	30	1.5	10	5	M5×16	RSC-6022	3,500	60	22	95	3	37	18	M10×35
RSC-1215	1,550	12	15	35	1.5	11	6	M6×18	RSC-6525	4,150	65	25	105	5	40	18	M12×40
RSC-1310	1,550	13	10	30	1.5	10	5	M4×12	RSC-7025	4,700	70	25	110	5	43	18	M12×40
RSC-1315	1,550	13	15	35	1.5	11	6	M6×18	RSC-7525	5,100	75	25	115	5	45	20	M12×40
RSC-1510	1,550	15	10	32	1.5	11	6	M4×12	RSC-8032	6,250	80	32	130	5	50	22	M16×50
RSC-1512	1,600	15	12	35	1.5	12	6	M5×16	RSC-9032	8,300	90	32	140	5	55	24	M16×50
RSC-1515	1,600	15	15	40	1.5	13	8	M6×20	RSC-10036	9,300	100	36	150	5	60	26	M16×50
RSC-1610	1,550	16	10	35	1.5	12	6	M4×12	RSC-11036	12,300	110	36	170	5	70	28	M16×50
RSC-1612	1,600	16	12	35	1.5	12	6	M5×16	RSC-12036	13,400	120	36	180	5	75	30	M16×50

RSC = SCSS-C, NSCSS-C



RSC-MS形寸法図



ステンレスセパレート形セットカラー RSC-MS形

●材質：カラー：SUS304 止めねじ：SUS304

型 式	価格	軸穴径 D	総幅 B±0.1	外径 D1	W	X	Y	止めねじ M×長さ	型 式	価格	軸穴径 D	総幅 B±0.1	外径 D1	W	X	Y	止めねじ M×長さ
RSC-0510MS	1,300	5	10	20	1	6	4	M4×10	RSC-1612MS	2,050	16	12	35	1.5	12	6	M5×16
RSC-0610MS	1,400	6	10	20	1	6	4	M4×10	RSC-1615MS	2,050	16	15	40	1.5	13	8	M6×20
RSC-0810MS	1,500	8	10	25	1.5	8	5	M4×12	RSC-2012MS	2,200	20	12	40	1.5	14	7	M5×16
RSC-0815MS	1,750	8	15	30	1.5	9	5	M6×15	RSC-2015MS	2,200	20	15	45	1.5	15	8	M6×20
RSC-1010MS	1,850	10	10	30	1.5	9	5	M4×12	RSC-2512MS	2,500	25	12	45	1.5	17	7	M5×16
RSC-1015MS	1,850	10	15	35	1.5	10	6	M6×18	RSC-2515MS	2,600	25	15	50	1.5	18	10	M6×25
RSC-1210MS	1,850	12	10	30	1.5	10	5	M4×12	RSC-3015MS	2,800	30	15	55	1.5	20	10	M6×25
RSC-1215MS	1,850	12	15	35	1.5	11	6	M6×18	RSC-3515MS	3,000	35	15	60	2	23	12	M6×25
RSC-1310MS	1,850	13	10	30	1.5	10	5	M4×12	RSC-4018MS	4,000	40	18	70	2	26	13	M8×30
RSC-1315MS	1,850	13	15	35	1.5	11	6	M6×18	RSC-4518MS	4,300	45	18	75	3	28	14	M8×30
RSC-1512MS	2,050	15	12	35	1.5	12	6	M5×16	RSC-5022MS	5,200	50	22	85	3	32	16	M10×35
RSC-1515MS	2,050	15	15	40	1.5	13	8	M6×20									

RSC-MS = SCMS-S, NSCSS-S